

# GC Habu

16A    11kW



Type 2 connector  
- European Standard

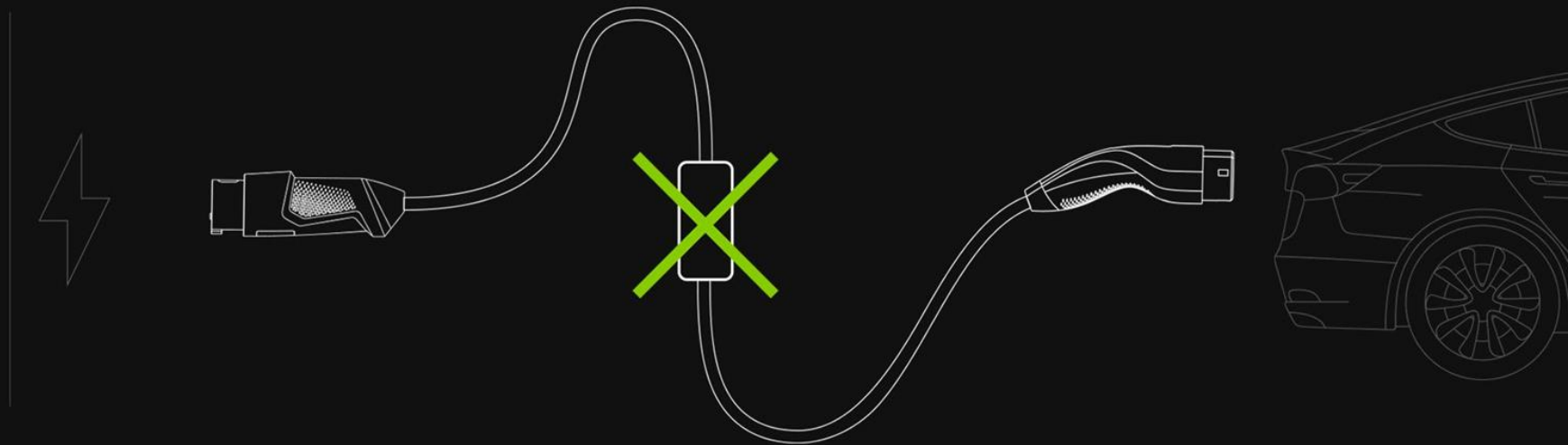


Red CEE 16 A  
- industrial plug

# 2in1 Charge at home and on the go



**#nobrick**  
**Lightweight 3,15kg**  
**Easy to use**



# Enjoy charging

Remote charge  
port opening



# Enjoy charging

#everywhere, even in dark driveway  
or garage or just anywhere at night



LED to illuminate  
the connector



# Enjoy charging



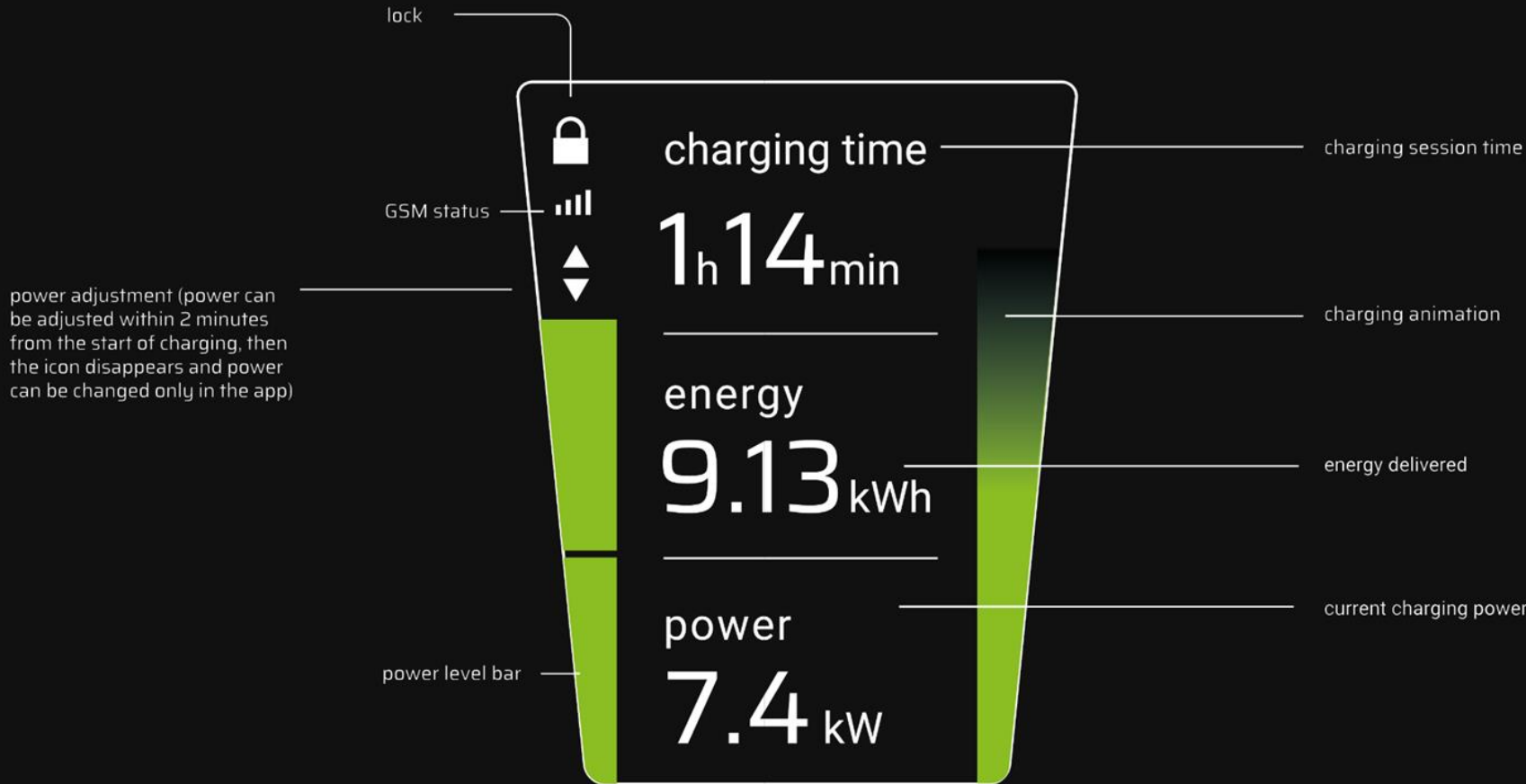
Haptic feedback handshake

Easy power regulation  
on the fly (Low/Mid/High)



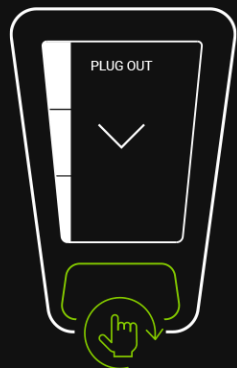
# Power meter on LCD screen

## View of basic charging parameters



# Enjoy charging

## Stop charging from connector



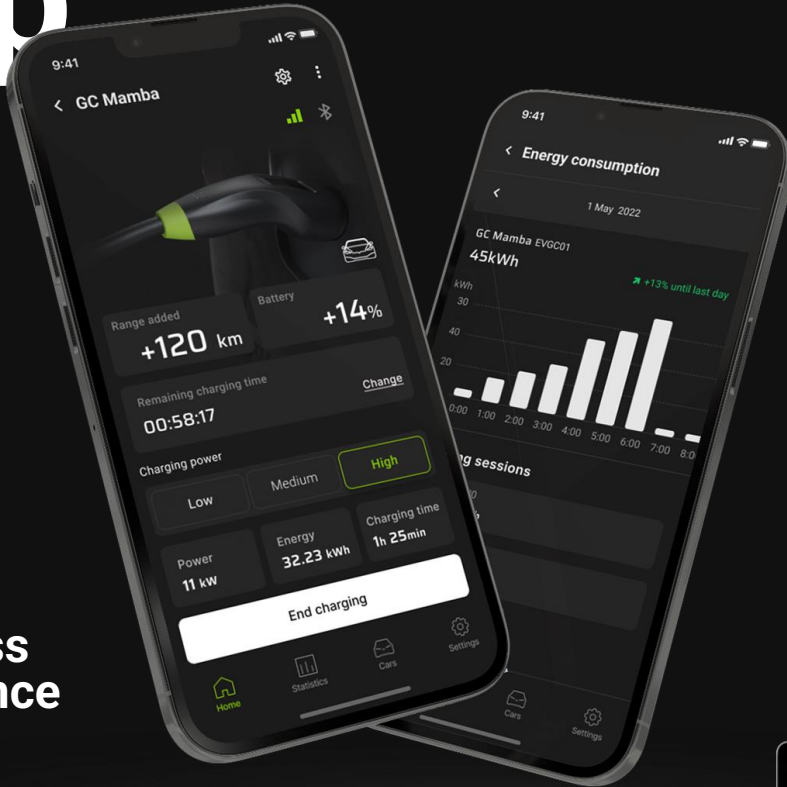
## Summary of the session



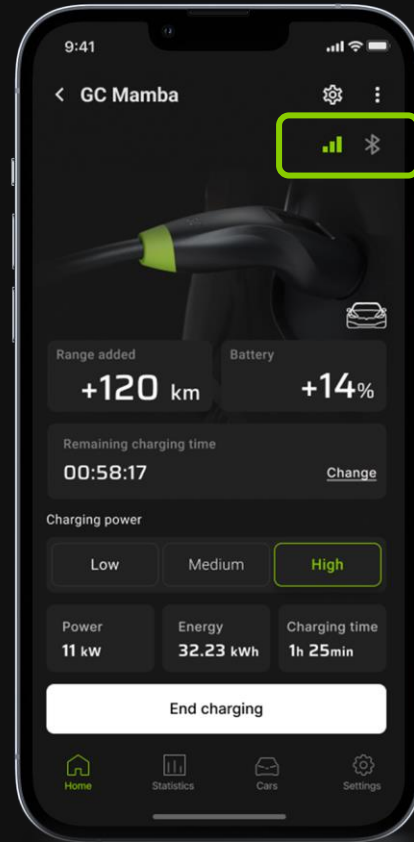


# App

seamless  
experience



# App



## Always Online

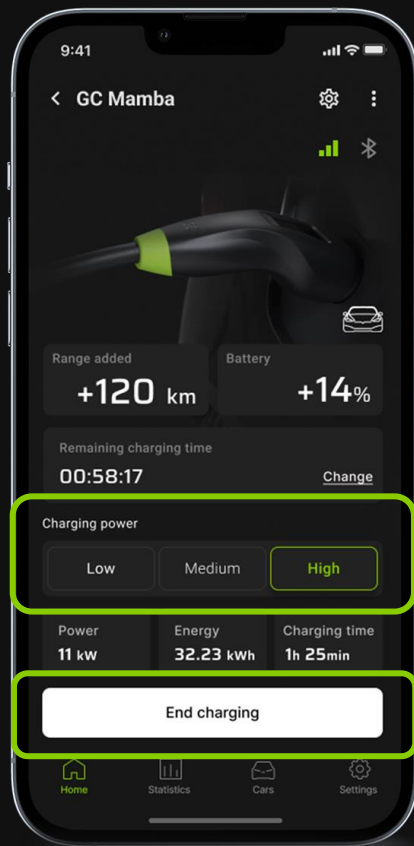
GC Habu is equipped with Bluetooth & GSM connectivity to keep you always up to date.

With GSM (built-in SIM card), you can control charging from any distance.

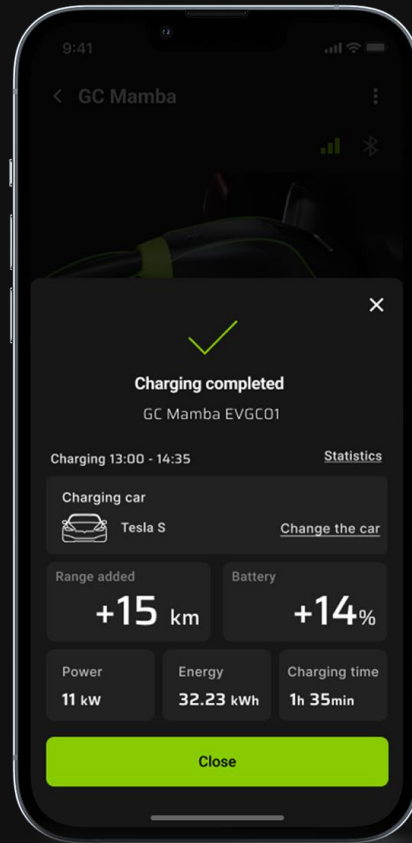
# App

**Remotely control  
the charging**

**Change the charging power, start  
charging, stop charging or specify  
until when it should last.**



# App



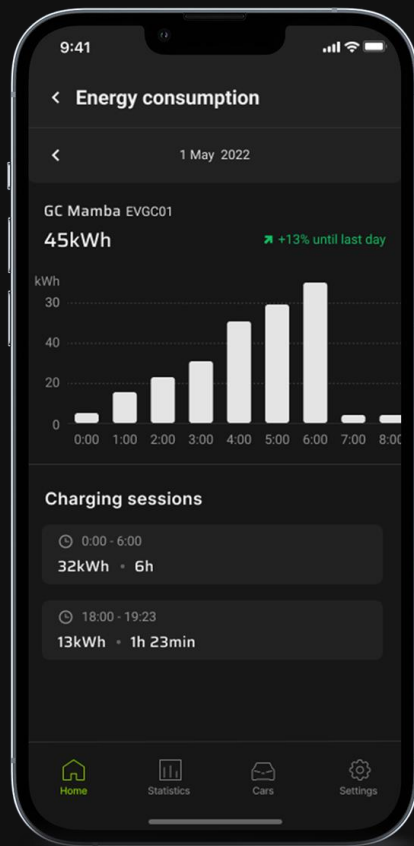
## Stay up to date

When charging is complete, you will get a notification with a summary of the session or information about the interruption of charging should it occur due to, for example, a temporary power outage.

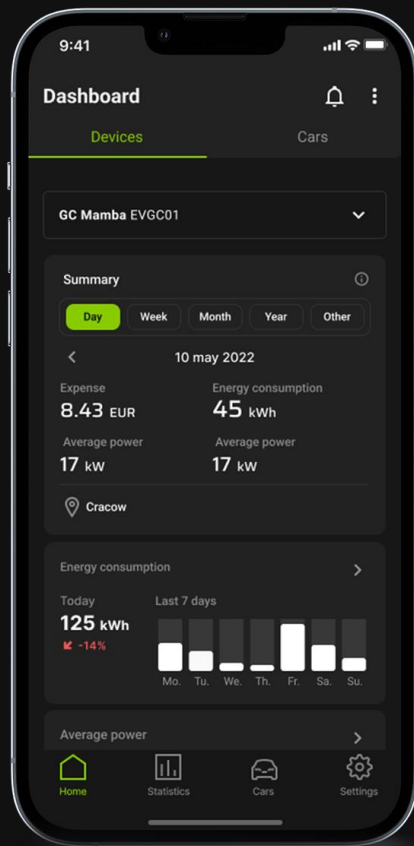
# App

## View statistics

View and analyze statistics on energy consumption and charging costs over any period of time.



# App



**Ready for future level app**

**Constantly developed and expanded with more functionalities.**

# Safety



**Waterproof and  
dustproof housing**



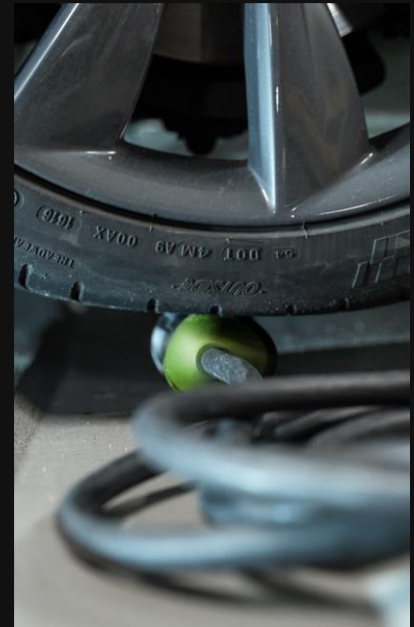
**Resistant to low and high temperatures**



# Safety

Tested under extreme conditions

TÜV certified standards: IEC 61851, IEC 62752,  
IEC 62196, IEC 60309





# Tech spec

Max. charging power	<b>11 kW</b>
Max. charging current	<b>16 A (3-phase)</b>
Charging current regulation	<b>From 6 A to 16 A</b>
Connector type (output)	<b>Type 2 (IEC 62196)</b>
Plug type (input)	<b>Red CEE 16 A 5P (IEC 60309)</b>
Communication	<b>Bluetooth, GSM (Built-in SIM card)</b>
Energy consumption	<b>Built-in energy meter</b>
Safety device	<b>Built-in RCD Type A + DC protection</b>
Ingress protection	<b>IP67 connector, IP55 plug (Dust &amp; Waterproof)</b>
Impact protection	<b>IK08 entire device (Drive-over resistance)</b>
Total length	<b>7 meters</b>
Operating temperature	<b>From -25 °C to +45 °C</b>
Warranty	<b>24 months</b>
Certification	<b>IEC 61851, IEC 62196, IEC 62752</b>
Weight	<b>3,15 kg</b>



# Tech spec

## Charging Levels

3-PHASE - 6 A (3.6 kW) - 10.6 A (7.2 kW) - 16 A (11 kW)

2-PHASE - 6 A (2.4 kW) - 10.6 A (4.8 kW) - 16 A (7.2 kW)

1-PHASE - 6 A (~1.2 kW) - 10 A (~2.2 kW) - 13 A (~3.1 kW) (up to 2 hours)

1-PHASE - 6 A (~1.2 kW) (after 2 hours)



Available in  
February 2023

SRP

**895 EUR**

**4195 PLN**

